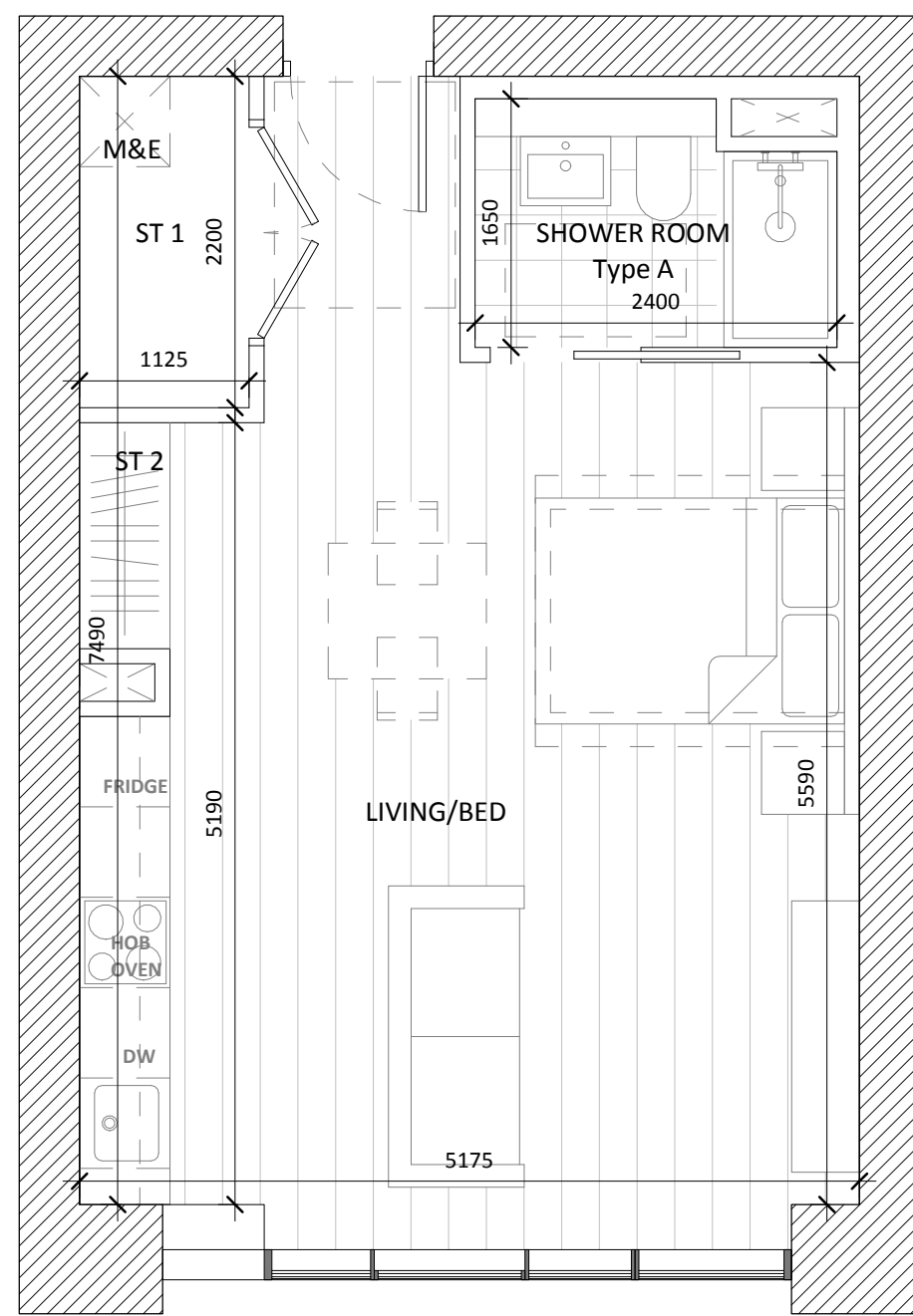
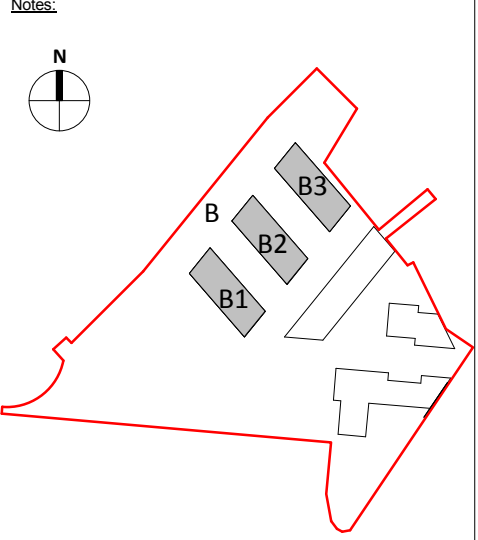
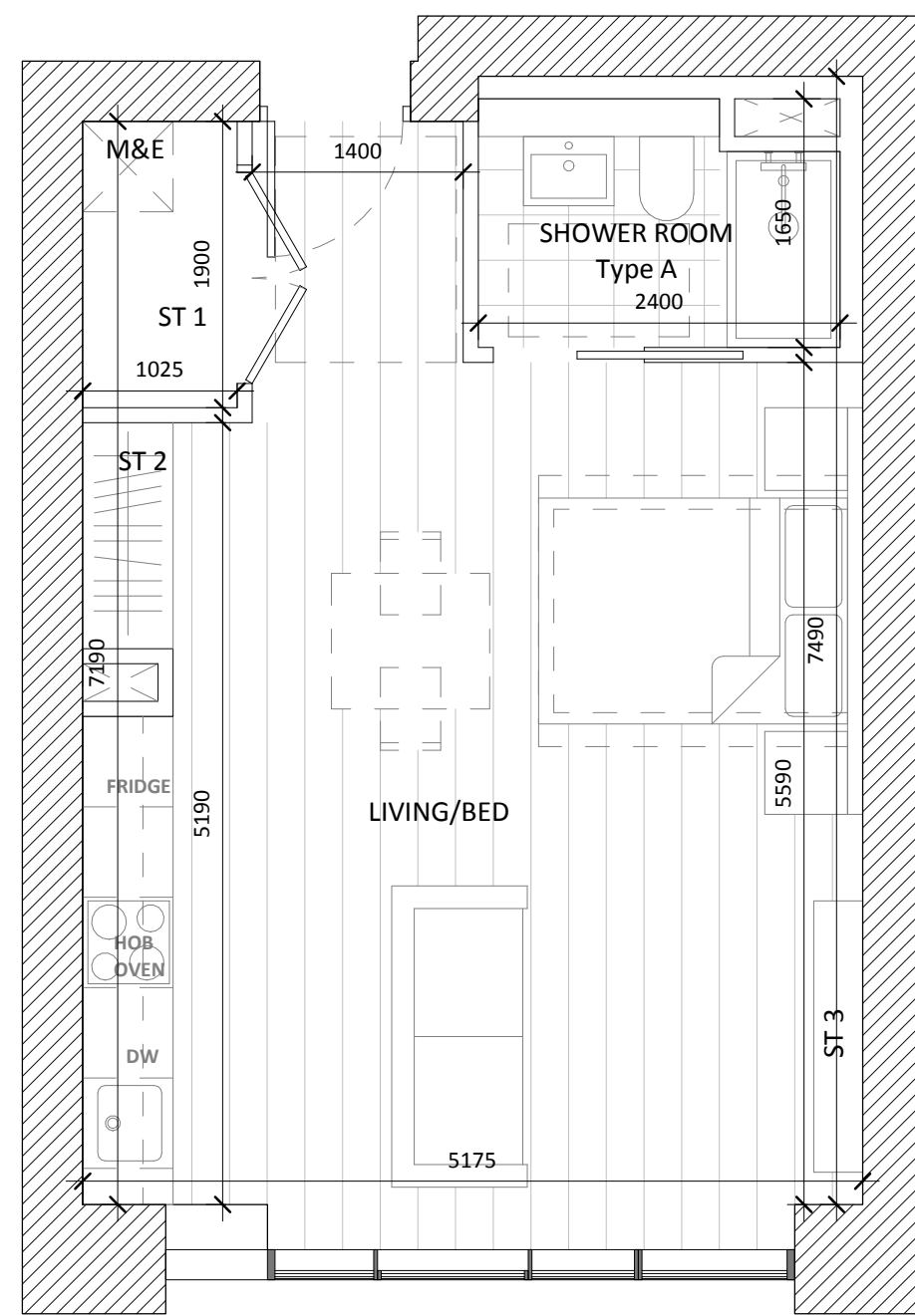


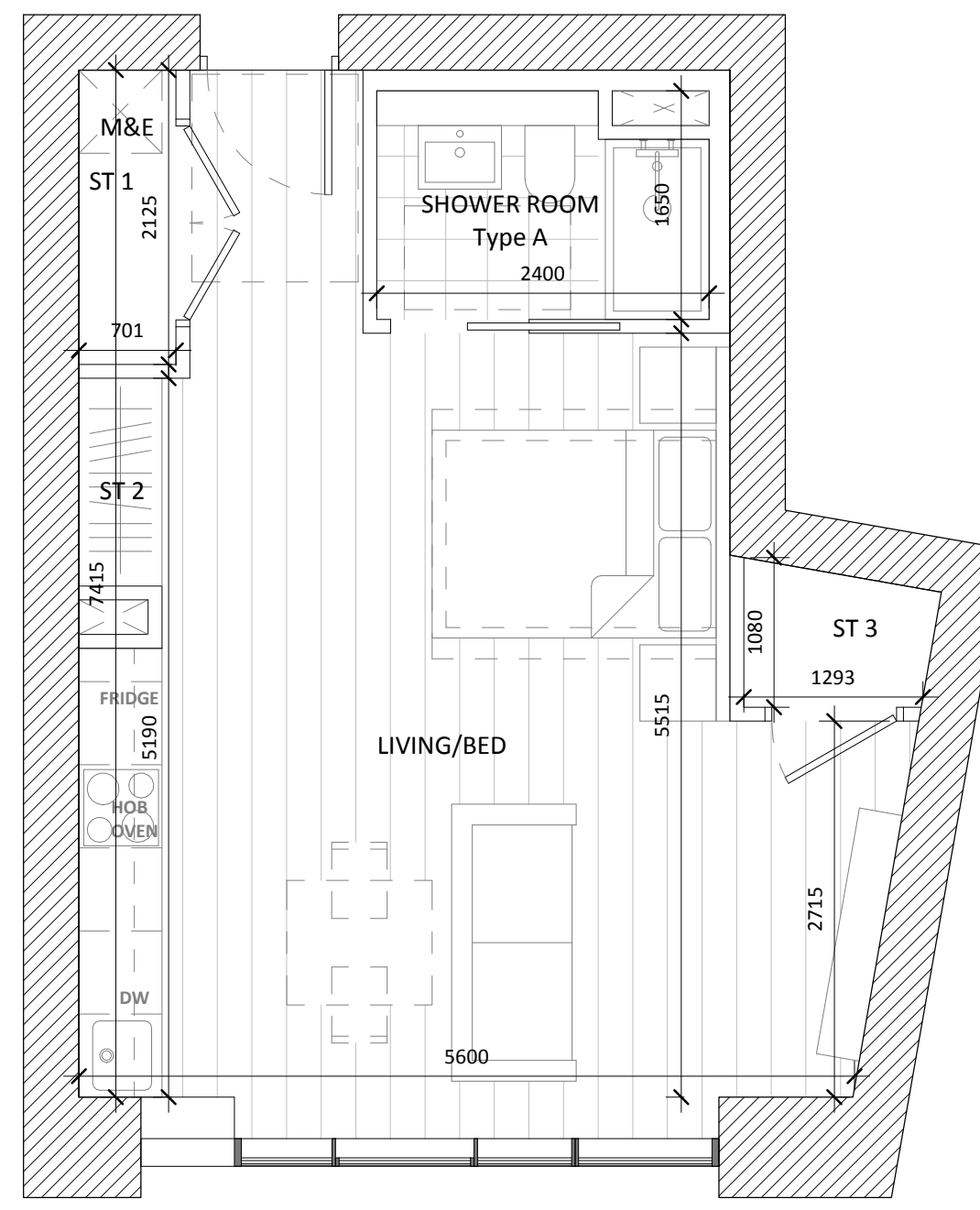
Copyright and ownership of this drawing is vested in RKD Architects, whose prior written consent is required for its use, reproduction or for publication to any third party. All rights reserved by the law of copyright and by international copyright conventions are reserved to RKD Architects and may be protected by court proceedings for damages and/or injunctions and costs. RKD Architects' Quality Management Systems are certified to ISO 9001:2015.



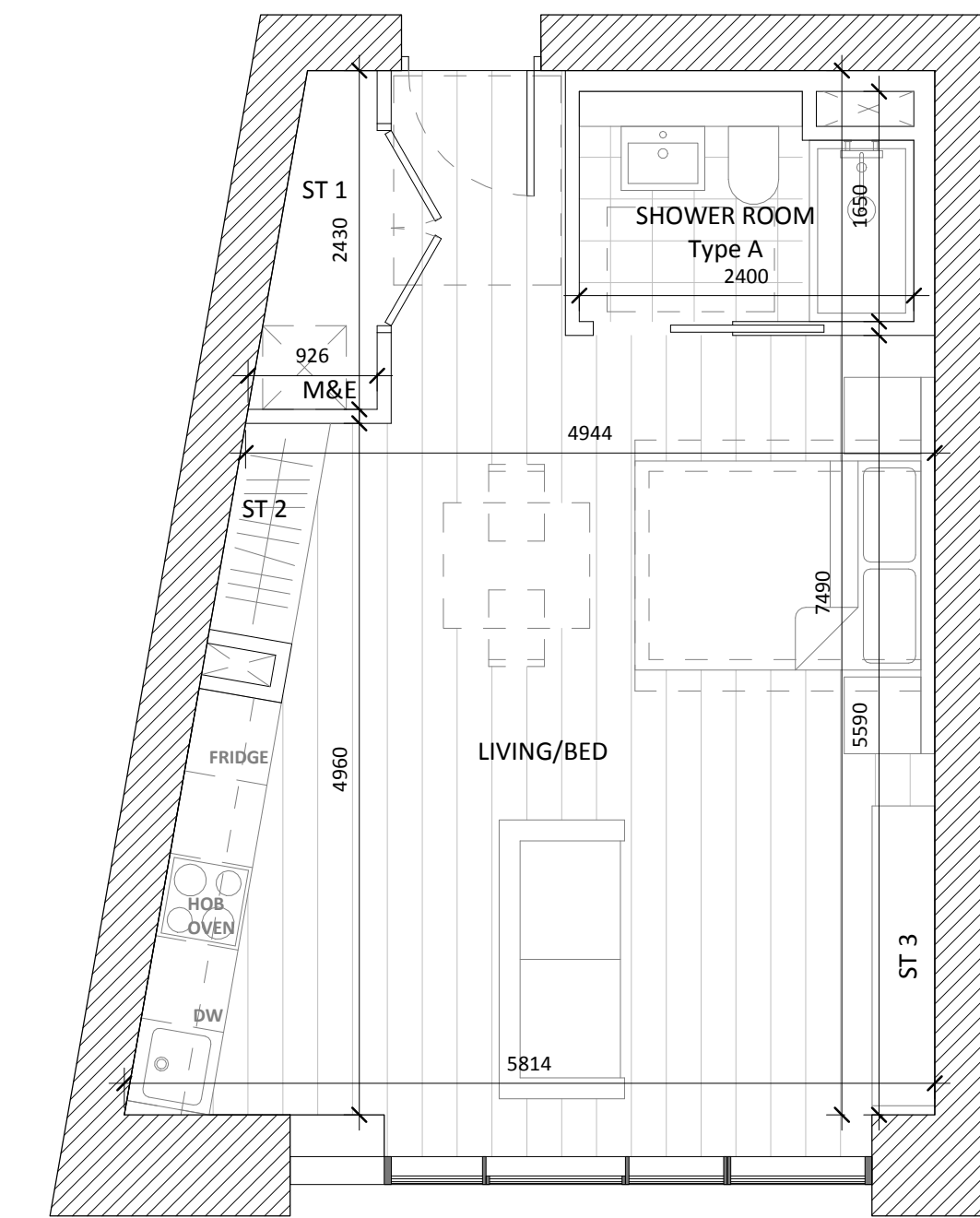
1B1P_B01		
	AREA ACHIEVED (m2)	AREA REQUIRED (m2)
GROSS INTERNAL AREA	39.8	37
NET INTERNAL AREA	38.6	-
LIVING / BED	30.8	30
SHOWER ROOM	3.7	-
STORAGE 1	2.1	-
STORAGE 2	0.9	3



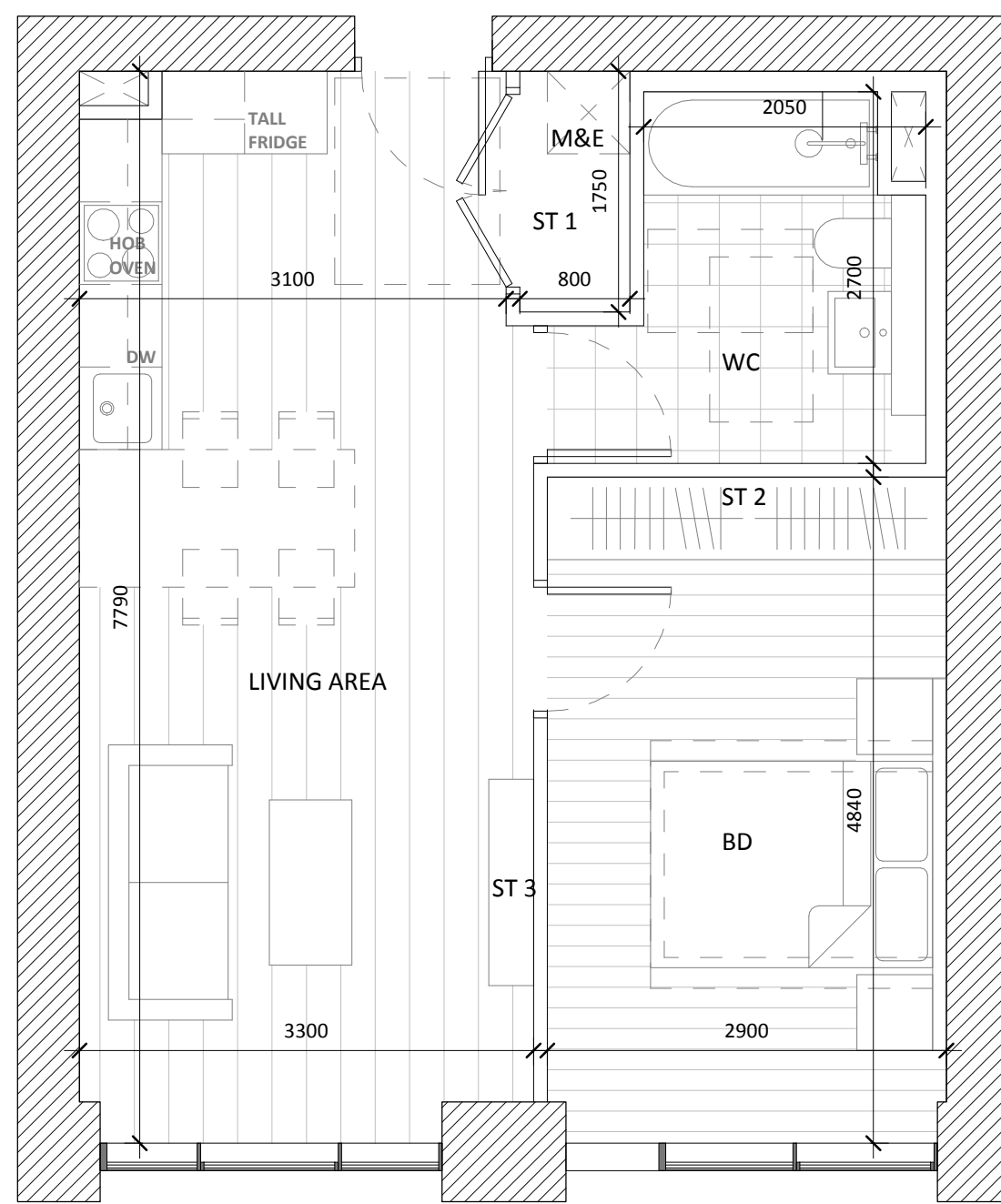
1B1P_B02		
	AREA ACHIEVED (m2)	AREA REQUIRED (m2)
GROSS INTERNAL AREA	39.0	37
NET INTERNAL AREA	37.8	-
LIVING / BED	30.0	30
SHOWER ROOM	3.7	-
STORAGE 1	1.6	-
STORAGE 2	0.9	3
STORAGE 3	0.6	-



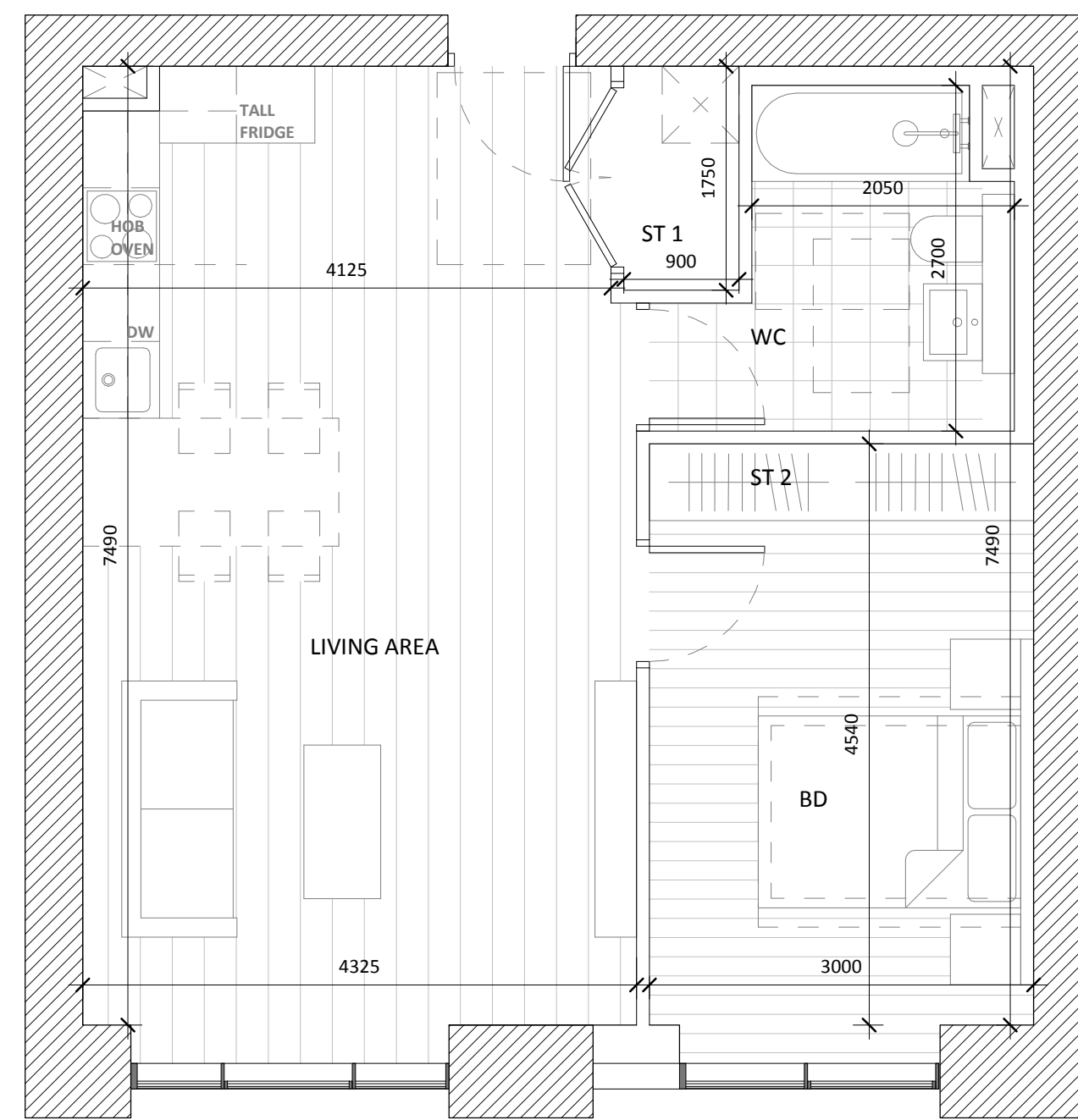
1B1P_B03		
	AREA ACHIEVED (m2)	AREA REQUIRED (m2)
GROSS INTERNAL AREA	40.5	37
NET INTERNAL AREA	39.3	-
LIVING / BED	31.0	30
SHOWER ROOM	3.7	-
STORAGE 1	1.0	-
STORAGE 2	0.9	3
STORAGE 3	1.3	-



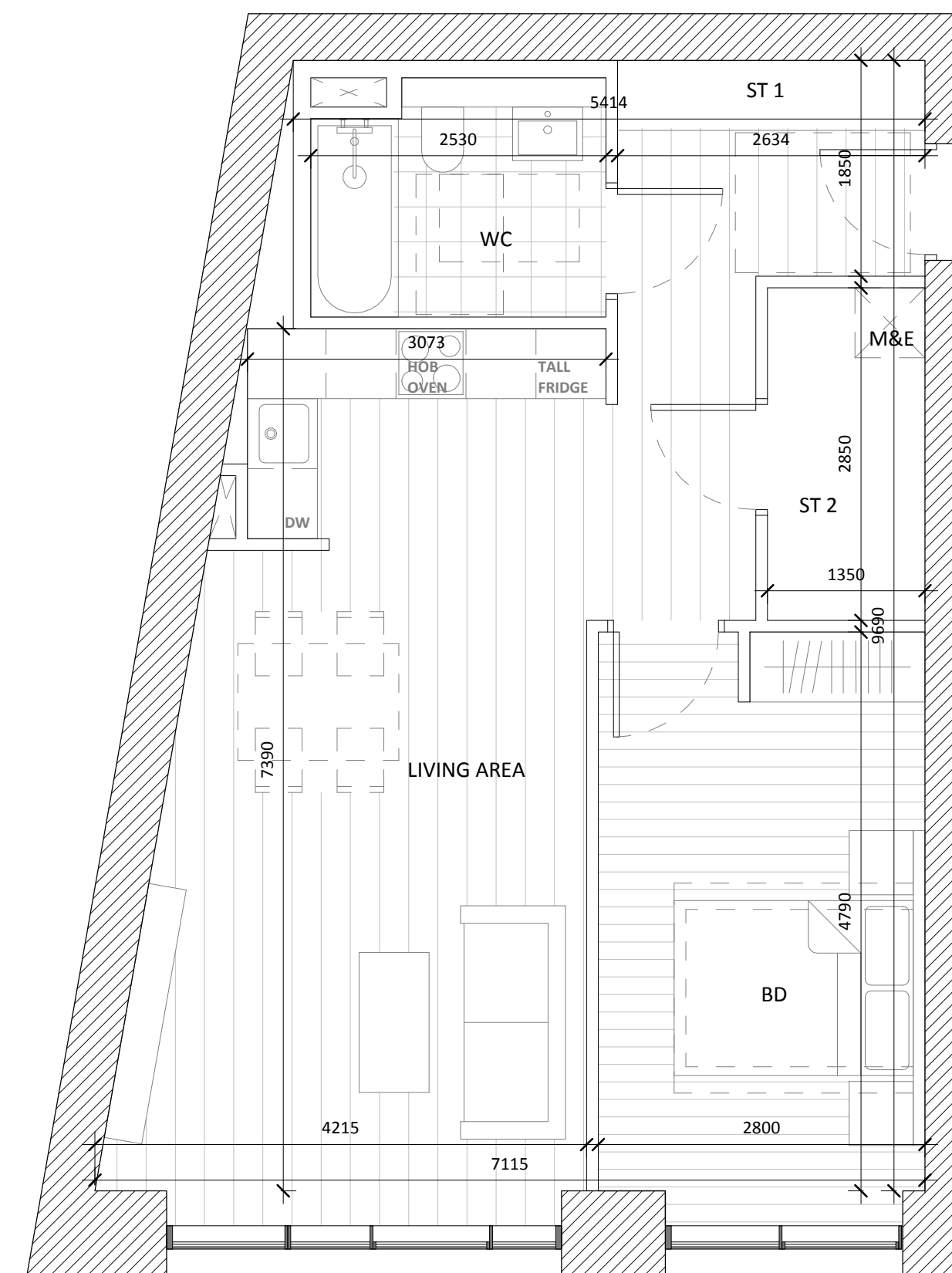
1B1P_B04		
	AREA ACHIEVED (m2)	AREA REQUIRED (m2)
GROSS INTERNAL AREA	39.7	37
NET INTERNAL AREA	39.5	-
LIVING / BED	30.4	30
SHOWER ROOM	3.7	-
STORAGE 1	1.3	-
STORAGE 2	0.9	3
STORAGE 3	0.9	-



1B2P_B21		
	AREA ACHIEVED (m2)	AREA REQUIRED (m2)
GROSS INTERNAL AREA	48.7	45
NET INTERNAL AREA	47.5	-
LIVING AREA	24.4	23
BEDROOM	12.2	11.4
WC	6.0	-
STORAGE 1	1.0	-
STORAGE 2	1.7	3
STORAGE 3	0.5	-



1B2P_B22		
	AREA ACHIEVED (m2)	AREA REQUIRED (m2)
GROSS INTERNAL AREA	56.9	45
NET INTERNAL AREA	55.7	-
LIVING AREA	32.6	23
BEDROOM	12.4	11.4
WC	6.0	-
STORAGE 1	1.2	3
STORAGE 2	1.8	-



1B2P_B23		
	AREA ACHIEVED (m2)	AREA REQUIRED (m2)
GROSS INTERNAL AREA	62.3	45
NET INTERNAL AREA	60.4	-
LIVING AREA	27.4	23
BEDROOM	14.0	11.4
WC	4.9	-
STORAGE 1	1.6	3
STORAGE 2	3.5	-

Rev.	Date	Description
A	OCT 2019	Issued for Planning Application Submission

STATUS: **PLANNING**

PROJECT: THE CONNOLLY QUARTER

PROJECT ADDRESS: Lands to the Rear of Connolly Station, Dublin 1

DWG TITLE: BLOCK B - APARTMENT TYPES (1 of 4)

DWG NO: 18135-RKD-B-ZZ-DR-A-1510

REV.	PROJECT NO.	SCALE
A	18135	1 : 50

DATE: JUN 2019 DRN: AMG CHK: CS

RKD

58 Northumberland Rd
Salthill, Dublin 4
D04 WFB9, Ireland

+353 1 668 1055
info@rkdartchitects.com
rkdartchitects.com

ARROW

Name: Farinagade 13, 41 th
DK-1364 Copenhagen K
Denmark

+45 4236 2860
info@arrowarchitects.com
www.arrowarchitects.com