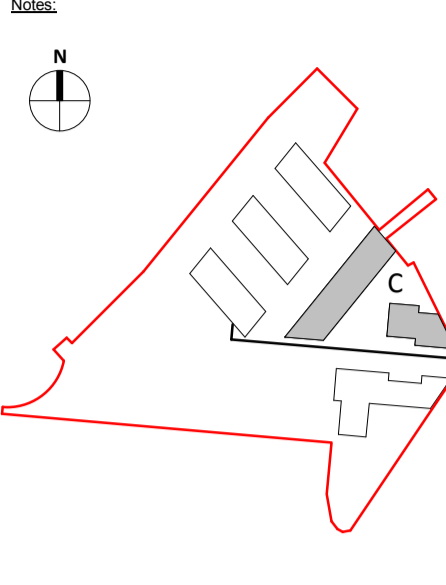


Copyright and ownership of this drawing is vested in RKD Architects, whose prior written consent is required for its use, reproduction or for publication to any third party. All rights reserved by the law of copyright and by international copyright conventions are reserved to RKD Architects and may be protected by court proceedings for damages and/or injunctions and costs.
 RKD Architects' Quality Management Systems are certified to ISO 9001:2015.



MATERIAL FINISHES

BRICKWORK

- BR1 LIGHT GREY BRICK
- BR2 LIGHT GREY RIBBED BRICKWORK
- BR3 BUFF BRICKWORK
- BR4 BUFF RIBBED BRICKWORK
- BR5 RED BRICKWORK
- BR6 DARK GREY BRICKWORK
- BR7 DARK GREY RIBBED BRICKWORK
- BR8 WHITE / GREY BRICKWORK
- BR9 WHITE / GREY RIBBED BRICKWORK

METAL CLADDING

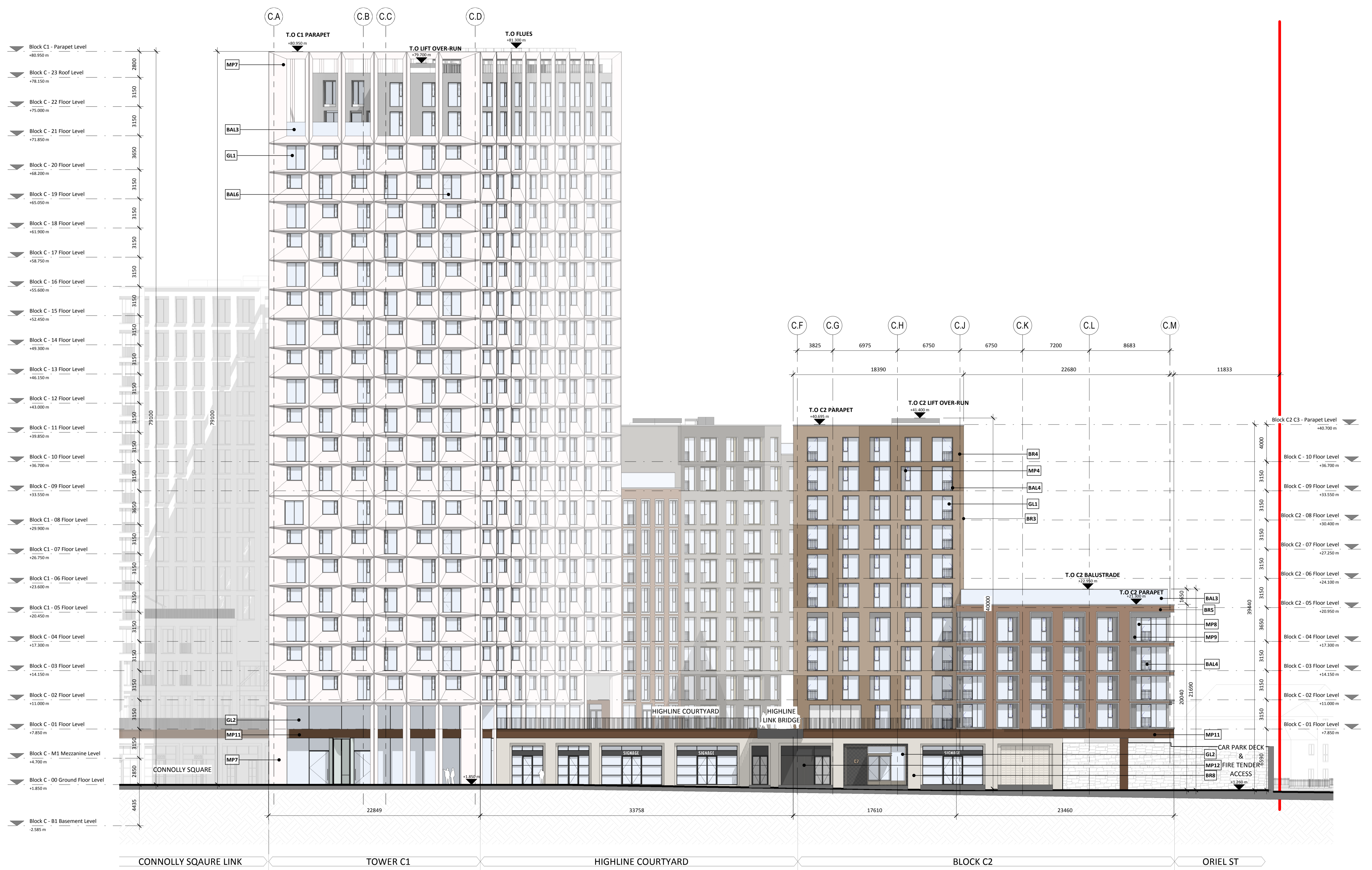
- MP1 LIGHT GREY METAL FILIGREE PANEL
- MP2 DARK GREY METAL FILIGREE PANEL
- MP3 DARK GREY STEEL TRUSS SYSTEM
- MP4 DARK GREY METAL PANEL
- MP5 ALUMINIUM MESH METAL PANEL
- MP6 PATTERNED METAL PANEL
- MP7 WHITE ALUMINIUM CLADDING
- MP8 GREY RIBBED METAL PANEL
- MP9 LIGHT GREY METAL REVEAL
- MP10 CREAM METAL PANEL
- MP11 CORTEN STEEL HIGHLINE BEAM
- MP12 REMOVABLE BESPOKE METAL SCREEN

GLAZING

- GL1 WINDOW GLAZING SYSTEM
- GL2 CURTAIN WALL GLAZING SYSTEM

BALUSTRADE

- BAL1 STEEL PODIUM BALUSTRADE
- BAL2 STEEL / CORTEN HIGHLINE BALUSTRADE
- BAL3 GLAZED SCREEN - TERRACE
- BAL4 DARK GREY STEEL BALUSTRADE
- BAL5 GLAZED SCREEN - PODIUM
- BAL6 GLAZED BALUSTRADE - APARTMENT



1 BLOCK C - SOUTH ELEVATION
 1 : 200

Rev.	Date	Description
A	OCT 2019	Issued for Planning Application Submission

STATUS: **PLANNING**

PROJECT: THE CONNOLLY QUARTER

PROJECT ADDRESS: Lands to the Rear of Connolly Station, Dublin 1

DWG TITLE: SOUTH ELEVATION

DWG NO: 18135-RKD-C-ZZ-DR-A-1300

REV.	PROJECT NO.	SCALE
A	18135	1 : 200

DATE: JUN 2019 DRN: CNAB CHK: CS

RKD

59 Northumberland Rd
 Ballsbridge, Dublin 4
 D04 W P96, Ireland

+353 1 666 1055
 info@rkd.ie
 rkd.ie

ARROW

Name: Farinagade 13, st th
 DK-1364 Copenhagen K
 Denmark

+45 4226 2860
 info@arrowarchitects.com
 www.arrowarchitects.com